



# REAX BOARD

PRODUCT LIST 3.3

VALID FROM NOVEMBER 12, 2018

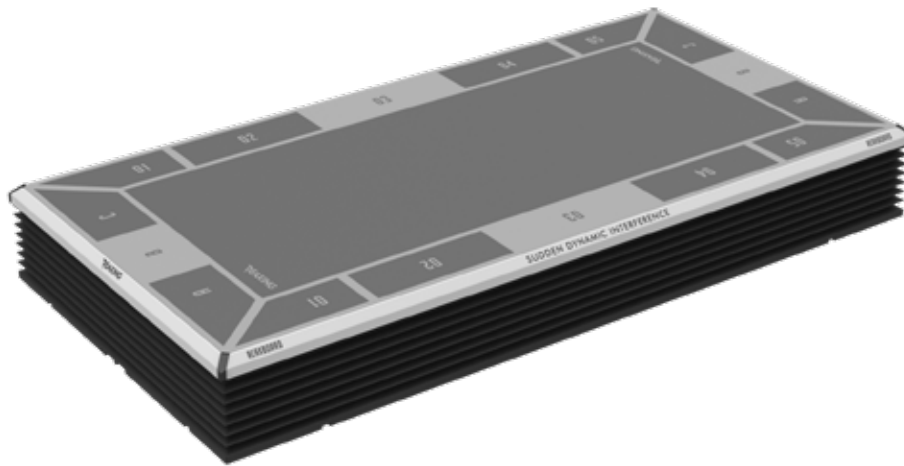


# REAX BOARD

## REAX BOARD 250 - PT / COACH / PHYSIO RX1410

FRONTAL INCLINATION: +/- 11%  
LATERAL INCLINATION: +/- 14%

TABLET NEEDED TO RUN THE REAX BOARD APP  
TABLET NOT INCLUDED



### SHIPMENT INFORMATION

Packages | Type

1 | WOODEN BOX  
5 | CARTONS

Total Volume (m<sup>3</sup>)

1,830

Total Weight (kg | lbs)

520,00 | 1146,40

MOQ

1

### TECHNICAL SPECS

Length (cm | in)

250,00 | 98,43

Height (cm | in)

33,00 | 12,99

Width (cm | in)

125,00 | 49,21

Weight (kg | lbs)

440,00 | 970,03

### POWER INFORMATION

Power Supply

110-240V / 50-60Hz

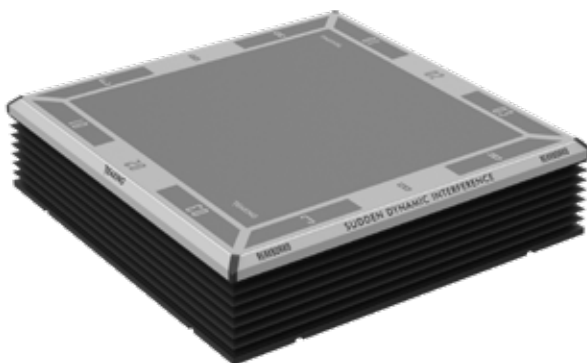
Power Consumption

2KW / 10A

## REAX BOARD 125 - PT / COACH / PHYSIO RX1412

FRONTAL INCLINATION: +/- 11%  
LATERAL INCLINATION: +/- 14%

TABLET NEEDED TO RUN THE REAX BOARD APP  
TABLET NOT INCLUDED



### SHIPMENT INFORMATION

Packages | Type

1 | WOODEN BOX

Total Volume (m<sup>3</sup>)

1,100

Total Weight (kg | lbs)

380,00 | 837,76

MOQ

1

### TECHNICAL SPECS

Length (cm | in)

125,00 | 49,21

Height (cm | in)

33,00 | 12,99

Width (cm | in)

125,00 | 49,21

Weight (kg | lbs)

320,00 | 705,48

### POWER INFORMATION

Power Supply

110-240V / 50-60Hz

Power Consumption

2KW / 10A

# REAX BOARD

## REAX BOARD 250 - STUDIO RX1458

FRONTAL INCLINATION: +/- 11%  
LATERAL INCLINATION: +/- 14%

OPTIONAL TABLET CONTROL  
TABLET NOT INCLUDED

INCLUDING:  
REAX BOARD 250  
REAX TOUCH STATION  
( WITH TOUCH 10" AND REAX BOARD APP )



### SHIPMENT INFORMATION

Packages | Type  
1 | WOODEN BOX  
6 | CARTONS  
Total Volume (m<sup>3</sup>)  
1,990  
Total Weight (kg | lbs)  
550,00 | 1212,54  
MOQ  
1

### TECHNICAL SPECS (reax touch station)

Height (cm | in)  
115,00 | 45,28  
Width (cm | in)  
29,00 | 11,42  
Depth (cm | in)  
26,00 | 10,24  
Weight (kg | lbs)  
28,00 | 61,73

### POWER INFORMATION

Power Supply  
110-240V / 50-60Hz  
Power Consumption  
100W / 5A

### TECHNICAL SPECS (reax board 250)

Length (cm | in)  
250,00 | 98,43  
Height (cm | in)  
33,00 | 12,99  
Width (cm | in)  
125,00 | 49,21  
Weight (kg | lbs)  
440,00 | 970,03

### POWER INFORMATION

Power Supply  
110-240V / 50-60Hz  
Power Consumption  
2KW / 10A

## REAX BOARD 125 - STUDIO RX1459

FRONTAL INCLINATION: +/- 11%  
LATERAL INCLINATION: +/- 14%

OPTIONAL TABLET CONTROL  
TABLET NOT INCLUDED

INCLUDING:  
REAX BOARD 125  
REAX TOUCH STATION  
( WITH TOUCH 10" AND REAX BOARD APP )



### SHIPMENT INFORMATION

Packages | Type  
1 | WOODEN BOX  
1 | CARTON  
Total Volume (m<sup>3</sup>)  
1,260  
Total Weight (kg | lbs)  
410,00 | 903,89  
MOQ  
1

### TECHNICAL SPECS (reax touch station)

Height (cm | in)  
115,00 | 45,28  
Width (cm | in)  
29,00 | 11,42  
Depth (cm | in)  
26,00 | 10,24  
Weight (kg | lbs)  
28,00 | 61,73

### POWER INFORMATION

Power Supply  
110-240V / 50-60Hz  
Power Consumption  
100W / 5A

### TECHNICAL SPECS (reax board 125)

Length (cm | in)  
125,00 | 49,21  
Height (cm | in)  
33,00 | 12,99  
Width (cm | in)  
125,00 | 49,21  
Weight (kg | lbs)  
320,00 | 705,48

### POWER INFORMATION

Power Supply  
110-240V / 50-60Hz  
Power Consumption  
2KW / 10A

# REAX BOARD

## REAX BOARD 250 - CLUB RX1462

FRONTAL INCLINATION: +/- 11%  
LATERAL INCLINATION: +/- 14%

OPTIONAL TABLET CONTROL  
TABLET NOT INCLUDED

INCLUDING:  
REAX BOARD 250  
REAX WORKOUT LIBRARY  
( WITH TOUCH 19" AND REAX BOARD WORKOUT APP)



### SHIPMENT INFORMATION

Packages | Type

1 | WOODEN BOX  
7 | CARTONS

Total Volume (m<sup>3</sup>)

2,00

Total Weight (kg | lbs)

557,00 | 1227,97

MOQ

1

### TECHNICAL

#### SPECS (reax workout library)

Height (cm | in)

180,00 | 70,87

Width (cm | in)

29,00 | 11,42

Depth (cm | in)

26,00 | 10,24

Weight (kg | lbs)

35,00 | 77,16

### POWER INFORMATION

Power Supply

110-240V / 50-60Hz

Power Consumption

100W / 5A

### TECHNICAL

#### SPECS (reax board 250)

Lenght (cm | in)

250,00 | 98,43

Height (cm | in)

33,00 | 12,99

Width (cm | in)

125,00 | 49,21

Weight (kg | lbs)

440,00 | 970,03

### POWER INFORMATION

Power Supply

110-240V / 50-60Hz

Power Consumption

2KW / 10A

# REAX BOARD

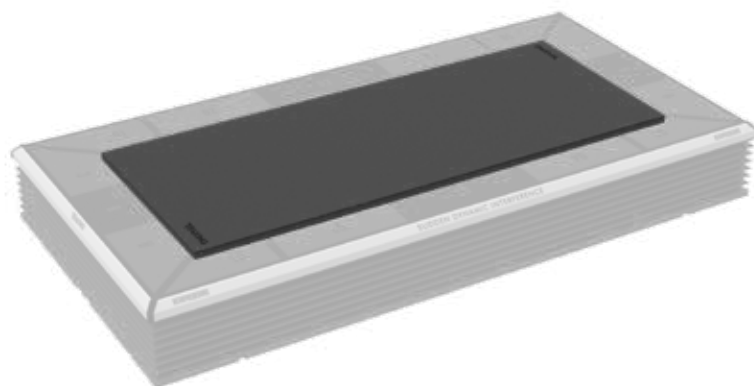
## SOFT MAT FOR BOARD 250

### RX1411

SOFT FLOORING

SUITABLE FOR:

- REAX BOARD 250 - PT/COACH/PHYSIO
- REAX BOARD 250 - STUDIO
- REAX BOARD 250 - CLUB



#### SHIPMENT INFORMATION

Packages | Type

1 | PLURIBALL

Total Volume (m<sup>3</sup>)

0,050

Total Weight (kg | lbs)

9,00 | 19,84

MOQ

1

#### TECHNICAL SPECS

Length (cm | in)

198,00 | 77,95

Height (cm | in)

3,00 | 1,18

Width (cm | in)

80,00 | 31,50

Weight (kg | lbs)

8,00 | 17,64

## TABLET

### RX1414

"INCLUDING:

REAX BOARD APP

REAX TABLET COVER"



#### SHIPMENT INFORMATION

Packages | Type

1 | CARTON BOX

Total Volume (m<sup>3</sup>)

0,002

Total Weight (kg | lbs)

1,00 | 2,20

MOQ

1

#### TECHNICAL SPECS

Length (cm | in)

NA | NA

Height (cm | in)

NA | NA

Width (cm | in)

NA | NA

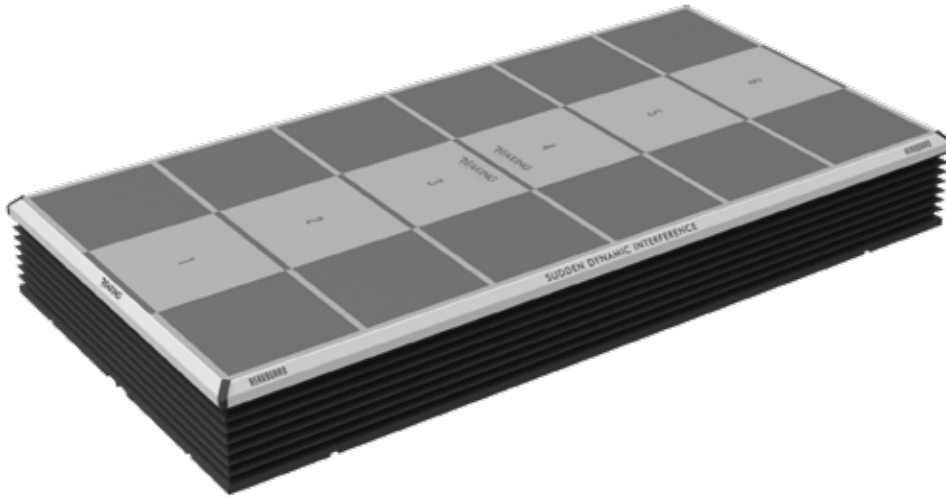
Weight (kg | lbs)

NA | NA

# REAX BOARD

## REAX BALANCE 250 RX1003

"FRONTAL INCLINATION: +/- 11%  
LATERAL INCLINATION: +/- 14%"



### SHIPMENT INFORMATION

Packages | Type

1 | WOODEN BOX

5 | CARTONS

Total Volume (m<sup>3</sup>)

1,830

Total Weight (kg | lbs)

450,00 | 992,08

MOQ

1

### TECHNICAL SPECS

Length (cm | in)

250,00 | 98,43

Height (cm | in)

33,00 | 12,99

Width (cm | in)

125,00 | 49,21

Weight (kg | lbs)

370,00 | 815,71







# EDUCATION SERVICES REAXING TRAINING METHOD

PRODUCT LIST 3.3

VALID FROM NOVEMBER 12, 2018



# **EDUCATION SERVICES - REAXING TRAINING METHOD**



## REAXING TRAINING METHOD



A ONE-DAY EDUCATION COURSE THAT TAKES PLACE IN A LOCATION SELECTED BY THE CLIENT. THE CLIENT INDICATES A DATE THAT HAS TO BE APPROVED BY REAXING. FOR FURTHER INFORMATION CONCERNING DURATION, TYPOLOGIES AND MAX NUMBER OF PARTICIPANTS, PLEASE VISIT [WWW.REAXING.COM](http://WWW.REAXING.COM)

### REAX TRAINING METHOD "IN HOUSE" SER007-RTM

#### ADDITIONAL EXPENSES FOR TEAM

INCLUDE:

- ROUND TRIP FLIGHTS.
- ROUND TRIP TRANSFER FROM THE AIRPORT TO THE ACCOMMODATION SITE;
- TRANSFERS FROM THE ACCOMMODATION SITE TO THE SETUP/ TRAINING LOCATION;
- ROOM AND BOARD: MEALS (breakfast, lunch and dinner) AND ACCOMODATION

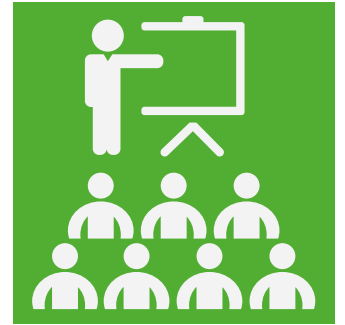
**SER017**

#### TRAVELING DAY

DAILY ALLOWANCE

**SER021**

## REAXING TRAINING METHOD



A ONE-DAY EDUCATION COURSE THAT TAKES PLACE IN A LOCATION SELECTED BY REAXING. THE DATE OF THE COURSE IS PLANNED BY REAXING. FOR FURTHER INFORMATION CONCERNING DURATION, TYPOLOGIES AND MAX NUMBER OF PARTICIPANTS, PLEASE VISIT [WWW.REAXING.COM](http://WWW.REAXING.COM)

### REAX TRAINING METHOD "IN OUR LOCATION" SER009-RTM



[WWW.REAXING.COM](http://WWW.REAXING.COM)

